

Meetings and Event Spaces

MYO Liverpool Street



Let's work around you

Myo provides design-led flexible meetings and events spaces supported by exceptional service from our dedicated on-site concierge team.

Our spaces are located in vibrant business communities within Landsec-owned buildings providing high quality, efficient and wellbeing-focused environments to optimise attendee and team performance.

Myo Liverpool Street is the second location in the Myo collection, just a minute from Liverpool Street station. Our private spaces are set within high-end surroundings with stunning City views from the seventh and eighth floors of the Dashwood building. Extra touches such as unlimited quality teas and coffee, filtered water and a curated art collection enrich the guest experience.

Myo Liverpool Street is pre-certified Gold WELL Building Standard™ recognising the conscientious design that focuses on health and wellbeing.



Your solutions

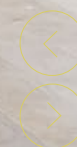
	Capacity	Cost per hour	Landsec customers	Myo members
The Hub	5	£60	£54	£48
Assembly 1	6	£65	£58	£52
Assembly 2	8	£75	£68	£59
Assembly 3	8	£75	£68	£59
The Lounge Room	10	£85	£76	£68
The Boardroom	14	£95	£85	£76
Assembly 2 & 3	16	£100	£90	£80
The Assembly	28	£160	£144	£128
The Assembly (theatre)	54	£250	£225	£200
The Lounge Room (expanded, theatre)	78		POA	
Seventh Floor (reception)	100		POA	

Your booking includes:

- Video conferencing, fixed internet connections and Wi-Fi
- Breakout space / telephone booths
- Independent heating and cooling a/c systems
- Unlimited quality coffees, teas and still and sparkling water
- Additional refreshments and catering available at cost
- Secure bike racks and foldable-bike lockers
- Showers, changing facilities and lockers
- Complimentary towel service
- 24/7 access and building security
- Dedicated support team, including concierge and housekeeping
- Dedicated IT support available at cost
- Hygienic brass fixtures and fittings

ENQUIRE TODAY →

020 3907 4389



Exceptional connections

Myo Liverpool Street

Dashwood, 69 Old Broad Street EC2M 1QS

Myo Liverpool Street is just a minute's walk from Liverpool Street underground and rail station offering excellent connections across London and beyond. The building is also moments from the new Crossrail entrance and cycle superhighways can be found in all directions.

From Liverpool Street by Underground

King's Cross	6 minutes
Euston	10 minutes
Waterloo	18 minutes

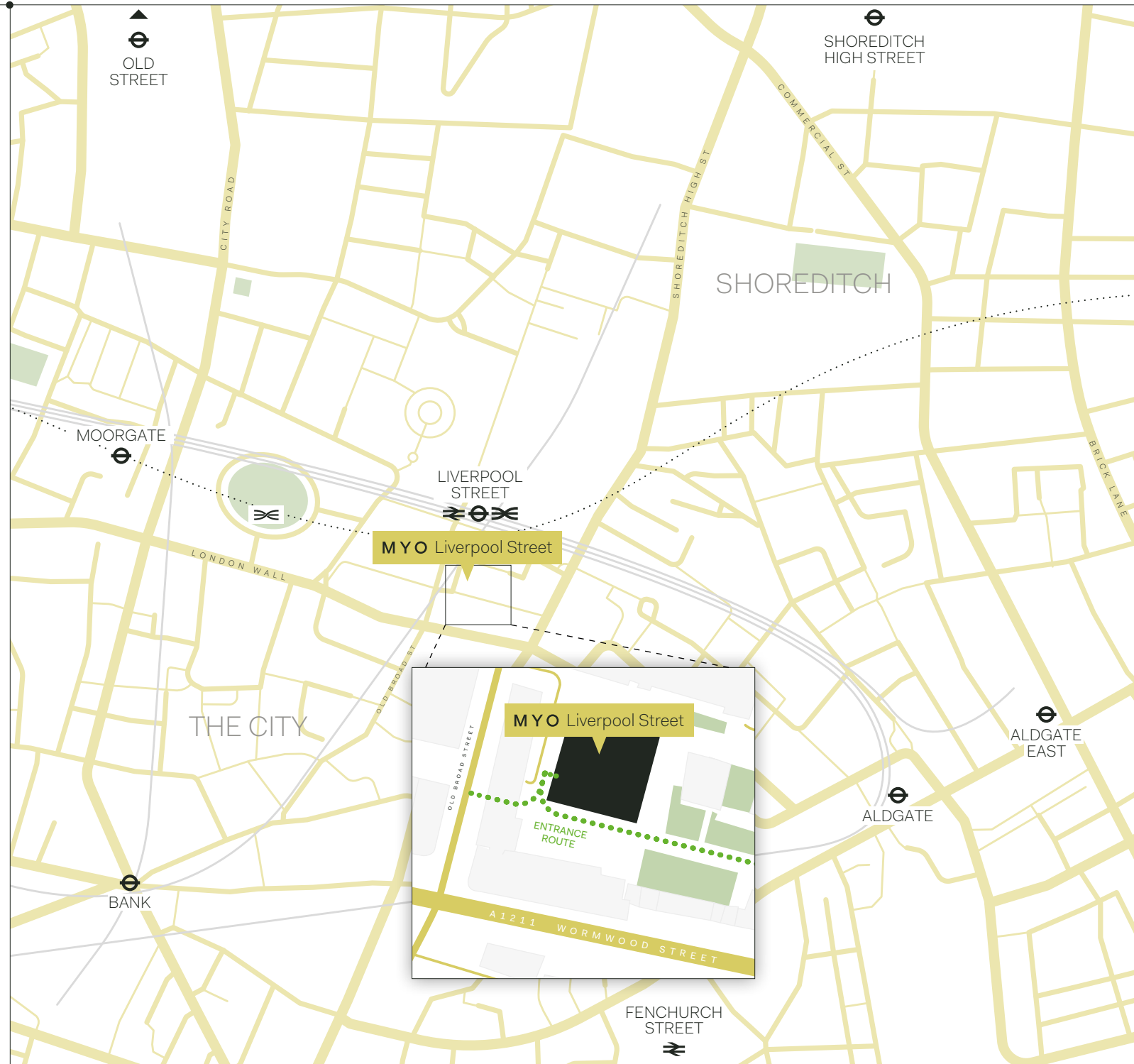
From Liverpool Street by Crossrail

Farringdon	2 minutes
Bond Street	7 minutes
Paddington	10 minutes

From Liverpool Street to London's Airports

Heathrow	40 minutes
Stansted	47 minutes
Gatwick	65 minutes

Journey time sources: Citymapper and Crossrail



Our spaces





The Hub

5 people

Maximise the effectiveness of your meeting with a 55" screen, video conferencing and large magnetic whiteboard.

Although you'll want to stay even longer when you're working in such a cosy, delightfully decorated space - especially with such a special view.

Area

158 sq ft
14.7 sq m

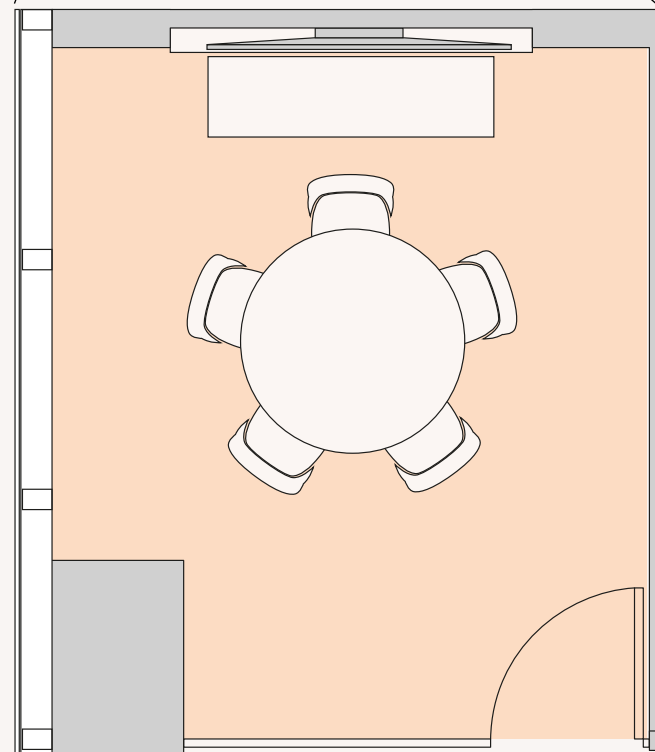
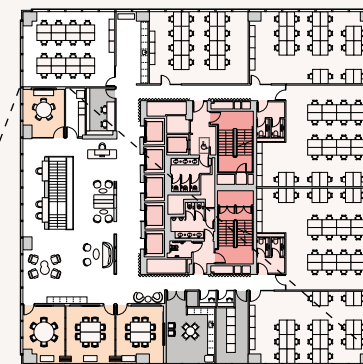
Prices

£60/hr

£54/hr for
Landsec customers

£48/hr for
Myo members

Eighth floor





Assembly 1

6 people

Nestled on the corner of the eighth floor, this bright meeting room sits six comfortably around a large circular table. Homely details such as the impeccable furnishing, frosted glass and acoustic-absorbing panels make this an ideal small meeting venue.

Area

196 sq ft
18.2 sq m

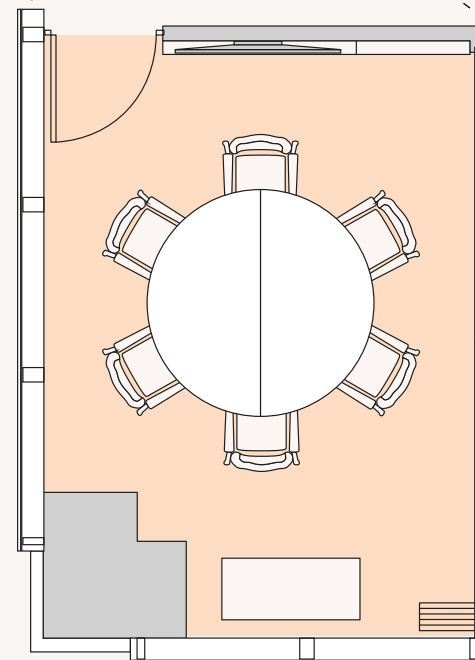
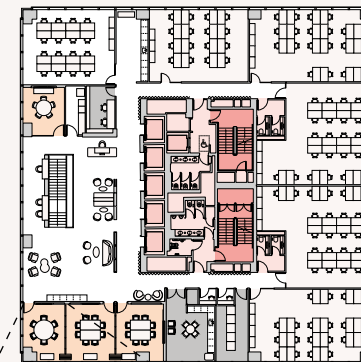
Prices

£65/hr

£58/hr for
Landsec customers

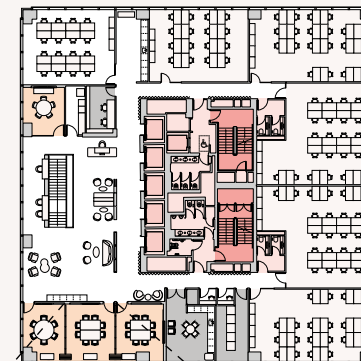
£52/hr for
Myo members

Eighth floor





Eighth floor



Assembly 2

8 people

55" screen, eight seats, video conferencing, in-desk power and charging ports, and you're good to go.

Area

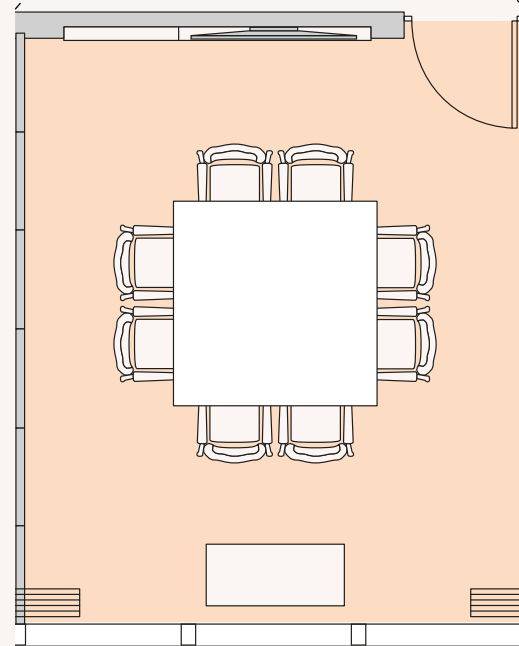
243 sq ft
22.6 sq m

Prices

£75/hr

£68/hr for
Landsec customers

£59/hr for
Myo members





Assembly 3

8 people

Fully immerse your team with the massive 85" screen and use the innovative magnetic whiteboard to present new and prepared ideas. Pens and magnets are provided, of course, and you can control every aspect of the environment to enhance the atmosphere.

Area

225 sq ft
20.9 sq m

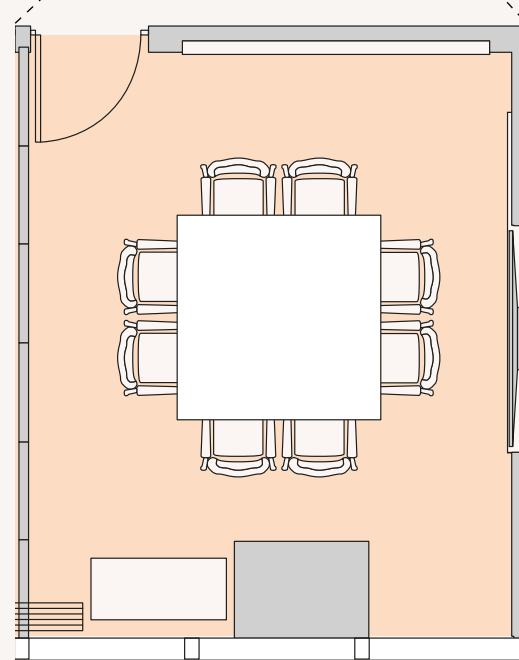
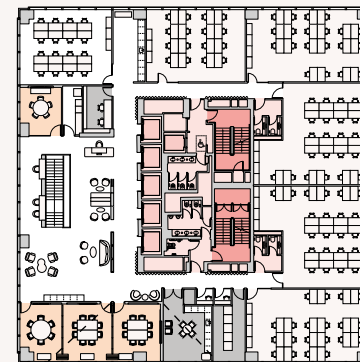
Prices

£75/hr

£68/hr for
Landsec customers

£59/hr for
Myo members

Eighth floor





The Lounge Room

10 people

Impressive bifold doors separate your ten-person meeting from the communal spaces until you are ready to break out - either to continue the discussion or join a larger event.

Set up with video-conferencing, in-desk power and charging, 65" screen and magnetic whiteboards, the room is equipped with all the tools you need for a productive meeting.

Area

282 sq ft
26.2 sq m

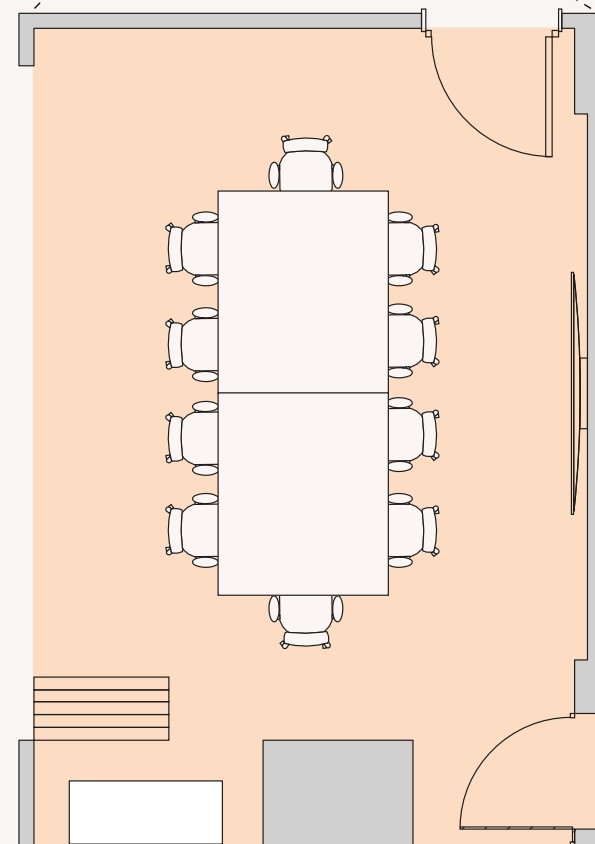
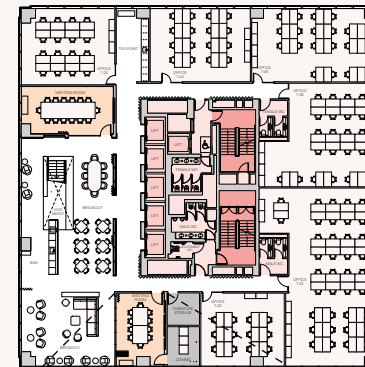
Prices

£85/hr

£76/hr for
Landsec customers

£68/hr for
Myo members

Seventh floor





The Boardroom

14 people

Offering a stylish, temperature controlled location with spectacular views over the City, The Boardroom is ideal for meetings of up to 14 people. Double-width magnetic whiteboard and an 85" screen surround the large oak table, setting the scene for innovation and creativity.

Area

363 sq ft
33.7 sq m

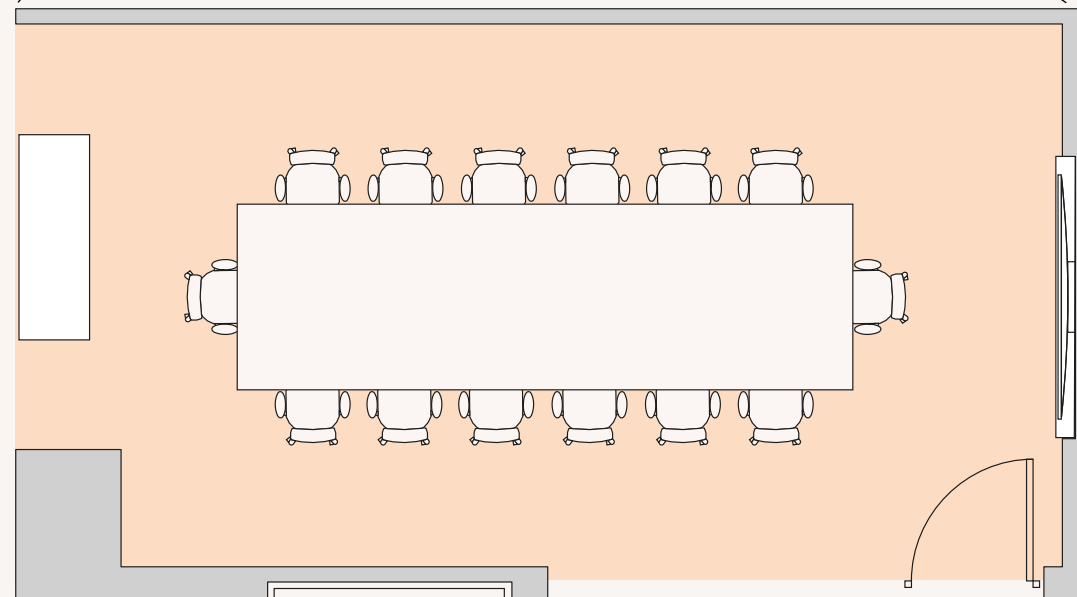
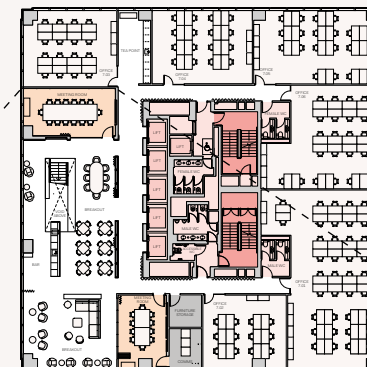
Prices

£95/hr

£85/hr for
Landsec customers

£76/hr for
Myo members

Seventh floor





Assembly 2 & 3

16 people

Need to accommodate more? Simply bring together these two rooms to upgrade your meeting to 16 people. Now you'll benefit from an 85" screen, magnetic whiteboard, two entrances and floor-to-ceiling windows.

Area

468 sq ft
43.5 sq m

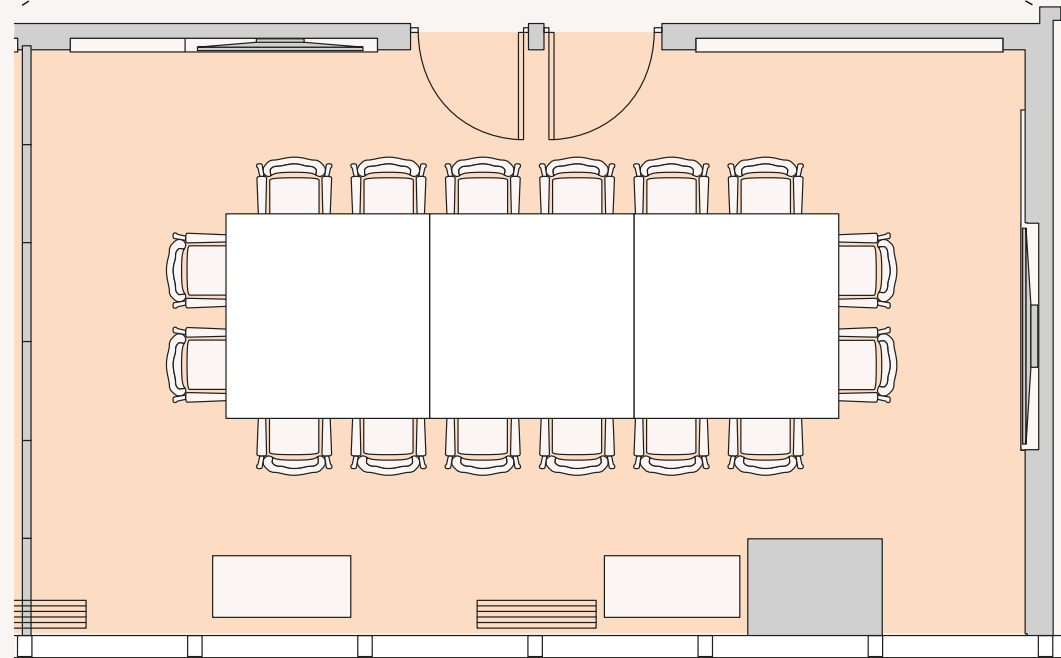
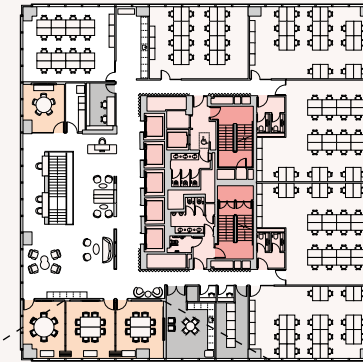
Prices

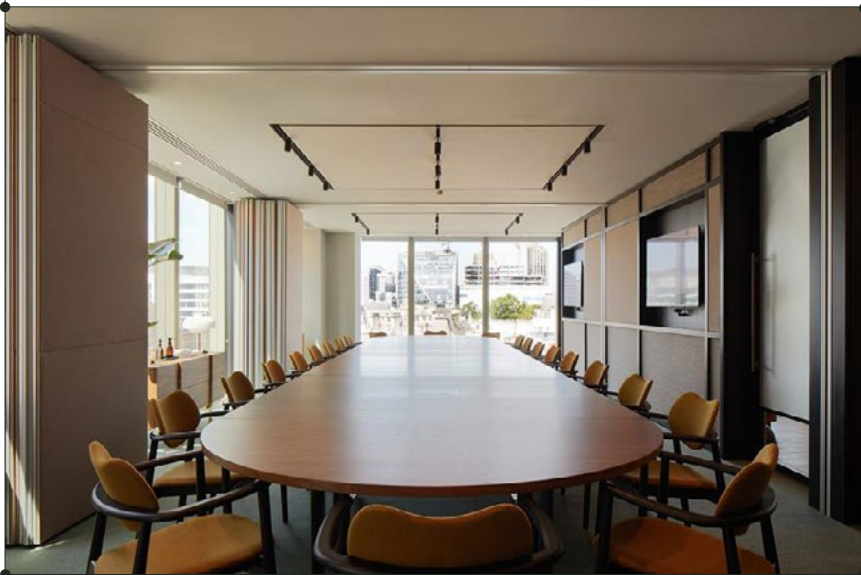
£100/hr

£90/hr for
Landsec customers

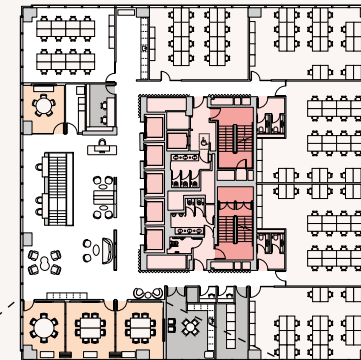
£80/hr for
Myo members

Eighth floor





Eighth floor



The Assembly

28 people

The most flexible meeting room at Myo Liverpool Street, with the option to split into three separate spaces.

Fully opened, there's room for up to 28 people around the adjustable boardroom table with an abundance of natural daylight flooding in, large 85" screen with video conferencing plus all the power and connectivity you would expect.

Area

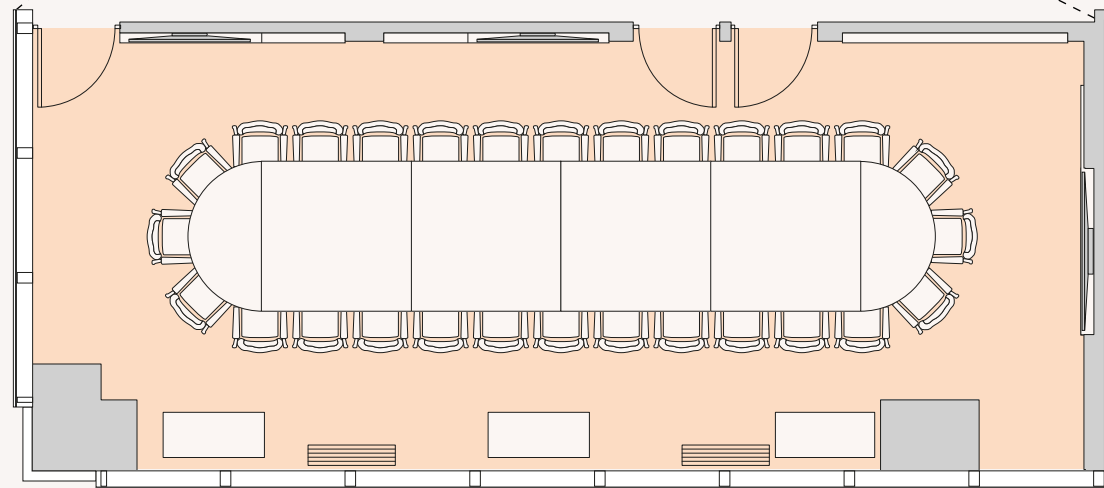
664 sq ft
61.7 sq m

Prices

£160/hr

£144/hr for
Landsec customers

£128/hr for
Myo members





The Assembly Theatre

54 people

The Assembly can be reconfigured to theatre-style, offering the perfect set up for presentations, talks or training. Seating up to 54 people with all eyes on the large 85" screen, the theatre set up ensures you have everyone's full attention.

With comfortable spacing, guests can enjoy easy access to the tea-points and facilities and the large floor to ceiling windows come with blinds, giving you the option to darken space if required.

Area

664 sq ft
61.7 sq m

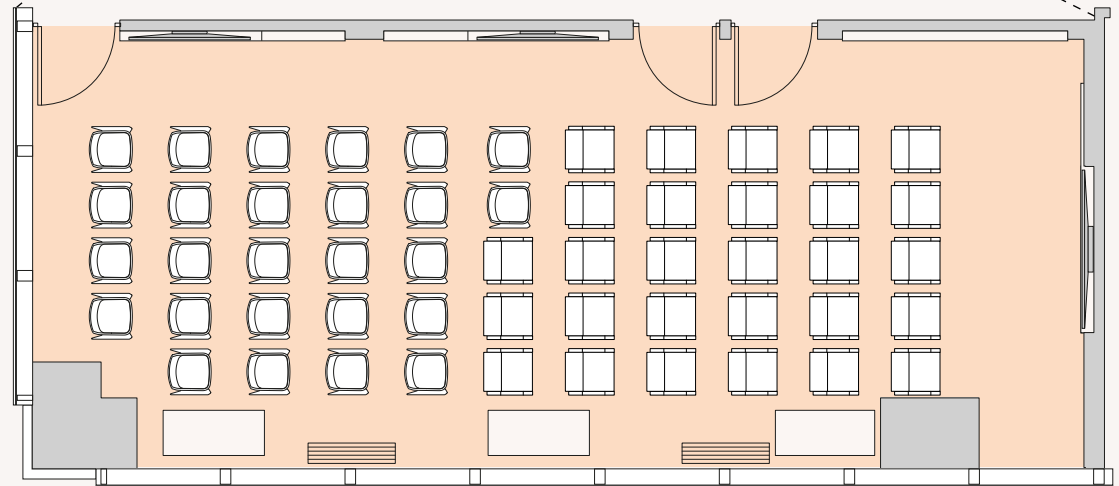
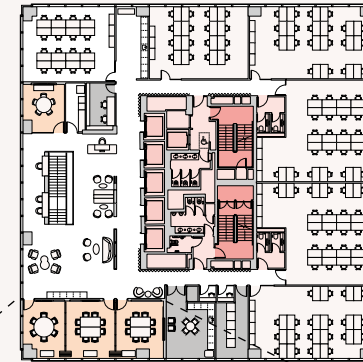
Prices

£250/hr

£225/hr for
Landsec customers

£200/hr for
Myo members

Eighth floor



Events





Events

Myo Liverpool Street's sleek and sophisticated spaces are designed with flexibility in mind.

If you're looking for even more, arrange the seventh floor in theatre style and create room for up to 78 guests, or make it cosy, close the curtains and seat 66.

Once you're done, we'll take the chairs away, freeing up the whole space for receptions of up to 100. The kitchen unit becomes a bar, and drinks can be served from the mobile refectory table.

We're even flexible with suppliers. We can provide additional paid-for services - such as catering and AV/IT support - through our trusted partners - or you're welcome to use your own, at no extra cost.

Priced on arrangement, larger events are available to book on weekdays, before 9.30am and after 5.30pm, and at weekends.

Contact our team today to discuss your requirements and we'll work around you.



MYO

www.myo.co.uk

Your contact

Jo Faria

+44 (0)7970 913 265

jo@myo.co.uk



Landsec